

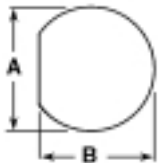
### MOUNTING FIGURES

#### C



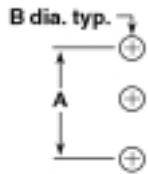
MOUNTING FIGURE	A
C-1	.182
C-2	.200
C-3	.220
C-4	.225
C-5	.267
C-6	.312
C-7	.362
C-8	.380
C-9	.447
C-10	.500
C-11	.621
C-12	.630
C-13	1.200

#### D



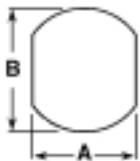
MOUNTING FIGURE	A	B
D-1	.140	.126
D-2	.195	.180
D-3	.256	.236
D-4	.277	.252
D-5	.317	.285
D-6	.330	.297
D-7	.382	.349
D-8	.407	.362
D-9	.440	.410
D-10	.477	.425
D-11	.506	.436
D-12	.512	.477
D-13	.557	.531
D-14	.630	.583
D-15	.630	.598
D-16	.695	.655
D-17	.760	.729

#### I



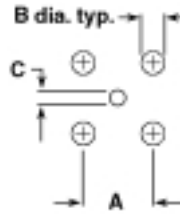
MOUNTING FIGURE	A	B
I-1	.200	.043
I-2	.200	.046

#### O



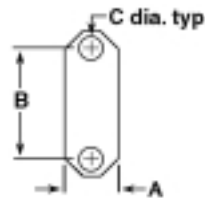
MOUNTING FIGURE	A	B
O-1	.217	.177
O-2	.236	.197
O-3	.319	.278
O-4	.362	.323
O-5	.380	.310
O-6	.382	.341
O-7	.445	.375
O-8	.508	.406
O-9	.634	.540
O-10	.755	.692

#### P



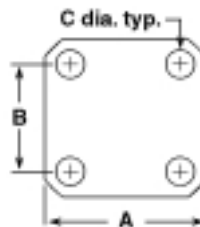
MOUNTING FIGURE	A	B	C
P-1	.100	.032	.032
P-2	.188	.070	.038
P-3	.200	.052	.047
P-4	.200	.052	.052
P-5	.200	.055	.028
P-6	.200	.055	.035
P-7	.200	.055	.043
P-8	.200	.067	.035
P-9	.200	.067	.047
P-10	.200	.067	.059
P-11	.260	.067	.043
P-12	.320	.091	.031
P-13	.320	.091	.047
P-14	.320	.091	.091
P-15	.340	.095	.045
P-16	.380	.087	.047
P-17	.400	.062	.062
P-18	.500	.069	.050

#### R



MOUNTING FIGURE	A	B	C
R-1	.140	.232	.067
R-2	.187	.329	.095
R-3	.192	.328	.067
R-4	.226	.481	.102
R-5	.230	.354	.067
R-6	.260	.481	.102
R-7	.275	.481	.102
R-8	.640	1.15	.125

#### S



MOUNTING FIGURE	A	B	C
S-1	.281	.164	.067
S-2	.374	.232	.095
S-3	.375	.232	.067
S-4	.433	.276	.102
S-5	.500	.340	#2-56 TAP
S-6	.500	.340	.102
S-7	.500	.360	.089
S-8	.625	.437	.094
S-9	.687	.500	#3-56 TAP
S-10	.687	.500	#4-40 TAP
S-11	.687	.500	.104
S-12	.687	.500	.109
S-13	.687	.500	.126
S-14	.687	.500	.136
S-15	.750	.531	.125
S-16	.750	.531	.136
S-17	.750	.531	.140
S-18	1.000	.718	#4-40 TAP
S-19	1.000	.718	#6-32 TAP
S-20	1.000	.718	.136
S-21	1.000	.718	.141
S-22	1.000	.718	.144
S-23	1.000	.718	.166
S-24	1.000	.719	.126
S-25	1.094	.812	.150
S-26	1.187	.906	#6-32 TAP
S-27	1.187	.906	.125
S-28	1.187	.906	.152
S-29	1.250	.975	.147
S-30	1.260	.977	.142
S-31	2.000	1.437	.257

Connectors