

SMZ CONNECTOR SPECIFICATIONS

FEATURES :

- Snap-on / quick disconnect mating
- 75Ω

APPLICATIONS :

- Telecom
- Computer
- Video

ELECTRICAL SPECIFICATIONS

Impedance	75 Ω
Frequency Range	0 – 3 GHz
Working Voltage	≥ 500 VRMS
Dielectric Withstanding Voltage	1500 VRMS at sea level
VSWR	Straight : 1.15 max Right Angle : 1.2 max
Contact Resistance	Center Contact : ≤ 5 mΩ Outer Contact : ≤ 12 mΩ
Insulation Resistance	5,000 MΩ min.

MATERIAL SPECIFICATIONS

Body and outer contacts	Brass, nickel or gold plated
Male contact	Brass, gold plated
Female contact	Phosphor Bronze, gold plated
Insulator	PTFE
Crimp ferrule	Copper or brass, nickel or gold plated

MECHANICAL SPECIFICATIONS

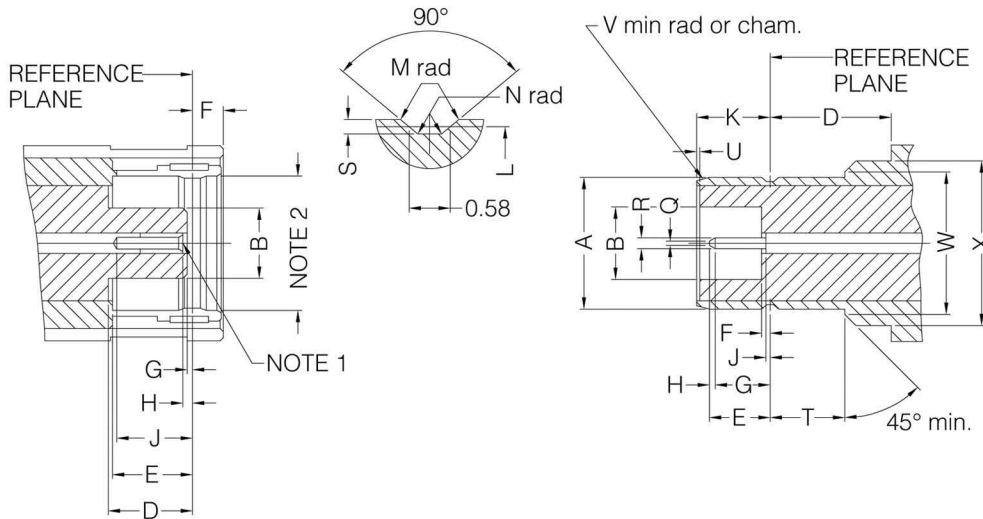
Contact Retention	≥ 6 lbs
Durability (matings)	500 cycles min.

ENVIRONMENTAL

Compliant with the requirements for RoHS Directive 2001/65/eu issued June 8, 2011	
Temperature Range	-65°C to +165°C

SMZ MATING DIMENSIONS

INTERFACE MATING DIMENSIONS



PLUG		
Letter	Millimeters	
	Minimum	Maximum
B	-	3.33
D	3.58	-
E	3.58	-
F	-	1.98
G	0.18	-
H	0.18	0.94
J	2.97	-

JACK		
Letter	Millimeters	
	Minimum	Maximum
A	6.20	6.25
B	3.35	-
D	2.36	-
E	-	2.97
F	-	0.18
G	1.32	-
H	0.25	-
J	-	0.18
K	3.33	3.58
L	5.97	6.07
M	0.05	0.15
N	-	0.13
Q	-	0.25
R	0.48	0.53
S	0.15	0.25
T	2.01	-
U	0.00	-
V	0.10	0.20
W	-	6.99
X	-	7.94

Note :

1. I.D. to meet VSWR and Contact resistance when mated with .48/.53 mm dia. pin.
2. Must meet the force to engage and disengage when mated with mating part.